


PN 10/16 - DN 40...1600

KAT-A 5010-e-E

Product characteristics and benefits

- With flange ends on both sides acc. to EN 1092-2
- Suitable for transmission of pipe forces
- For easy installation and dismantling of valves

Materials

- Body: Steel S235JRG2
- Sealing: NBR
- Threaded anchor bolts: Steel S235JRG2, galvanized

Corrosion protection

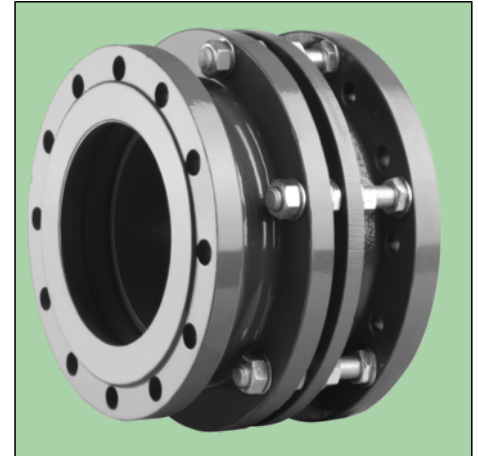
- Inside and outside epoxy coating

Versions

- Standard version as described
- For buried installation with protective jacket of steel S235JRG2, galvanized
- Bigger sizes available on request
- Special designs available on request
- Other pressure ratings available on request

Field of Application

- Underground installation
- Chamber installation
- Installation in plants


Note

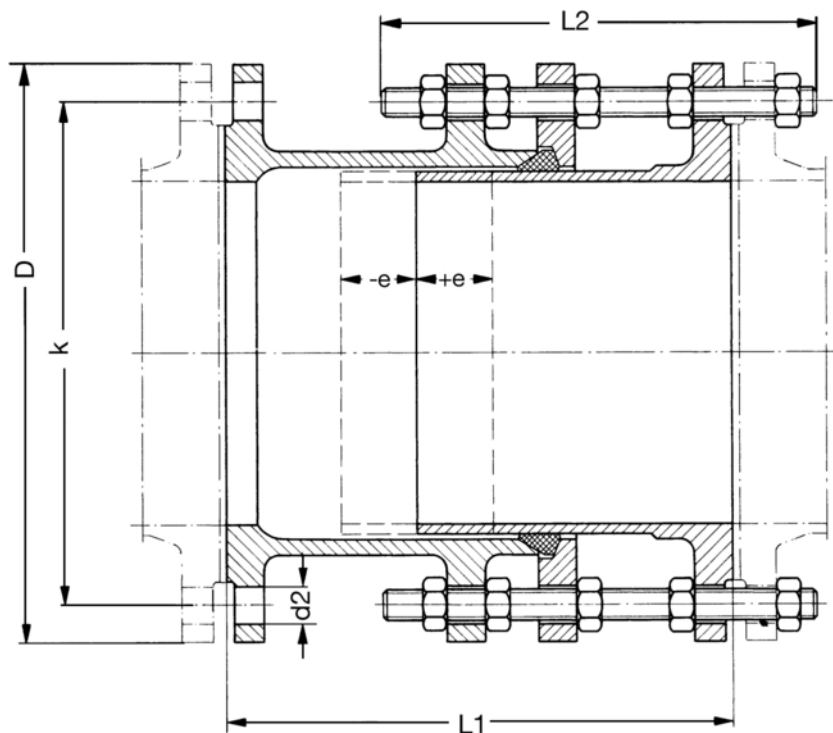
For proper installation and safe operation please follow the installation and operation instructions:

“Installation and Operating Instructions for Valves”

Field of application

DN	PN	Maximum operating pressure [bar]	Maximum operating temperature for neutral liquids [°C]
40...1400	16	16	50
200...1400	10	10	50

Drawing



e = +/- 25 mm movable

L1 = Face-to-face length in intermediate position

Technical data

PN 16

DN		40	50	65	80	100	125	150	175	200	250	300	350
D	[mm]	150	165	185	200	220	250	285	315	340	405	460	520
L1	[mm]	300	300	300	300	300	300	350	350	350	375	375	425
L2	[mm]	250	250	250	250	250	250	290	290	290	320	320	350
d2	[mm]	18	18	18	18	18	18	22	22	22	26	26	26
k	[mm]	110	125	145	160	180	210	240	270	295	355	410	470
No. of holes		4	4	4	8	8	8	8	8	12	12	12	16
Volume approx.	[m ³]	0.005	0.006	0.008	0.012	0.014	0.016	0.025	0.030	0.036	0.058	0.074	0.104
Weight approx.	[kg]	12.00	14.00	17.00	23.00	28.00	35.00	50.00	59.00	67.00	100.00	118.00	166.00

PN 16

DN		400	450	500	600	700	800	900	1000	1100	1200	1300	1400
D	[mm]	580	640	715	840	910	1025	1125	1255	1355	1485	1585	1685
L1	[mm]	425	425	450	475	475	525	525	550	575	600	625	625
L2	[mm]	350	350	380	400	400	450	450	450	450	525	525	525
d2	[mm]	30	30	33	36	36	39	39	42	42	48	48	48
k	[mm]	525	585	650	770	840	950	1050	1170	1270	1390	1490	1590
No. of holes		16	20	20	20	24	24	28	28	32	32	32	36
Volume approx.	[m ³]	0.128	0.158	0.214	0.310	0.364	0.520	0.570	0.778	0.908	1.272	1.450	1.640
Weight approx.	[kg]	207.00	236.00	310.00	419.00	449.00	614.00	696.00	893.00	1013.00	1396.00	1552.00	1680.00


Technical data
PN 10

DN	200	250	300	350	400	450	500	600	700	800	900	1000
D [mm]	340	395	445	505	565	615	670	780	895	1015	1115	1230
L1 [mm]	350	350	350	350	375	375	375	400	400	450	450	475
L2 [mm]	290	290	290	290	320	320	320	340	340	380	380	420
d2 [mm]	22	22	22	22	26	26	26	30	30	33	33	36
k [mm]	295	350	400	460	515	565	620	725	840	950	1050	1160
No. of holes	8	12	12	16	16	20	20	20	24	24	28	28
Volume approx. [m ³]	0.036	0.050	0.062	0.080	0.112	0.134	0.158	0.226	0.300	0.430	0.520	0.698
Weight approx. [kg]	63.00	89.00	102.00	126.00	162.00	178.00	200.00	269.00	334.00	457.00	520.00	636.00

PN 10

DN	1100	1200	1300	1400	1500	1600
D [mm]	1340	1455	1575	1675	1785	1915
L1 [mm]	475	525	550	550	550	600
L2 [mm]	420	450	450	470	470	490
d2 [mm]	36	39	42	42	42	48
k [mm]	1270	1380	1490	1590	1700	1820
No. of holes	32	32	32	36	36	40
Volume approx. [m ³]	0.830	1.048	1.232	1.450	1.646	1.975
Weight approx. [kg]	745.00	985.00	1186.00	1258.00	1470.00	1905.00